



1 IN 50 children in Canada are diagnosed with Autism

Autism impacts the way a person communicates and interacts with people and the world around them.

CURRENT RESEARCH

Research shows that Autism is **diverse**. Different children show different strengths and challenges; and those change as children grow and develop.

However, current policy, clinical, and research models are not designed to address that diversity. As a result, our models of care often fail to meet the unique and changing needs of Autistic children and their families.

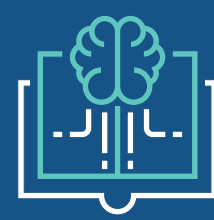
Working to bridge current gaps in policy, clinical, and research models to better address the diversity of Autism.



WHAT IS THE PARC STUDY?

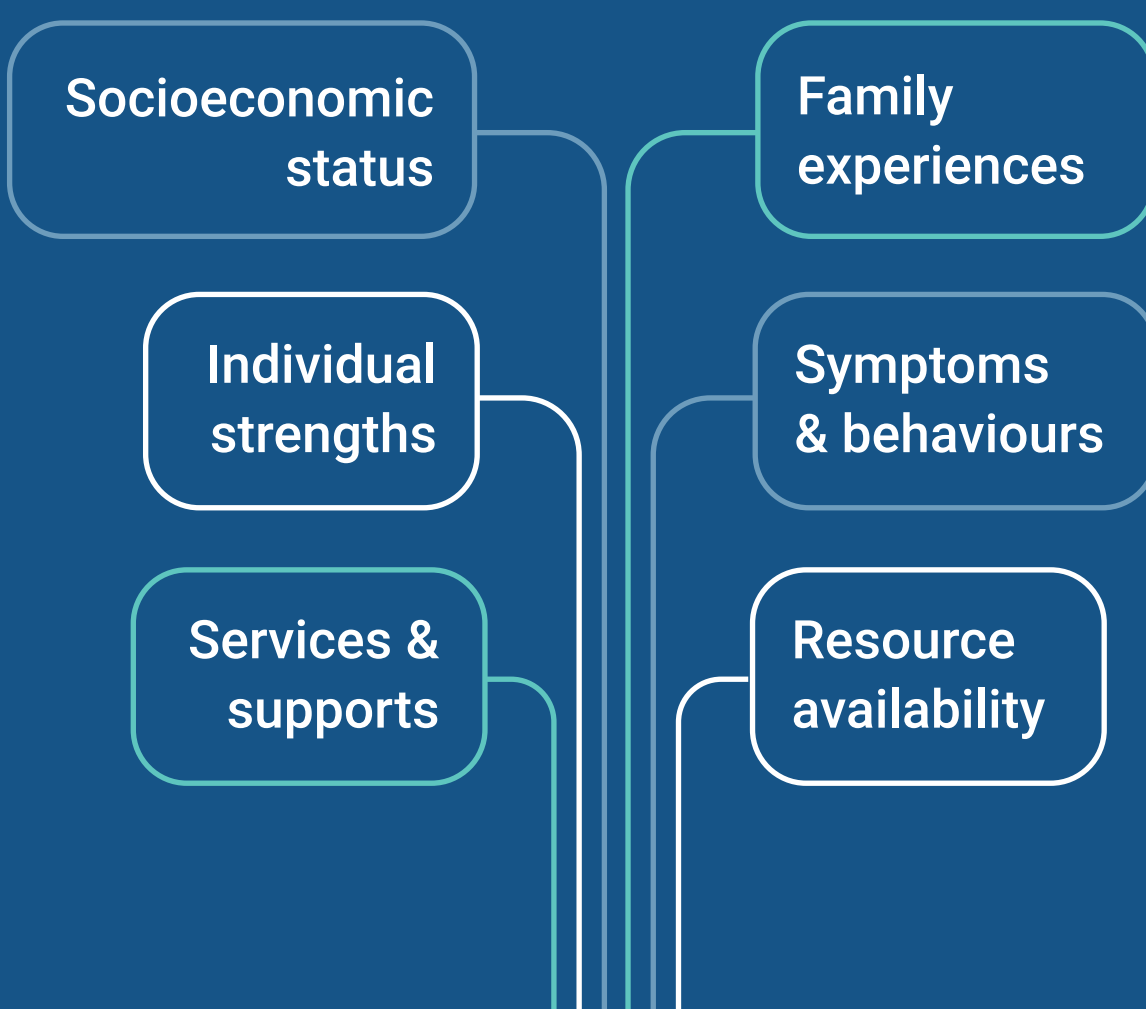
To examine the factors that influence diversity in how Autism unfolds over time, our team is carrying out a study called the **Pediatric Autism Research Cohort (PARC)**.

The PARC Study Goals

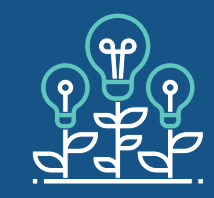


1 Generate new knowledge on the **factors contributing** to the **diverse pathways** and **outcomes** in Autistic children during the preschool and early school years.

Factors influencing development of an Autistic child

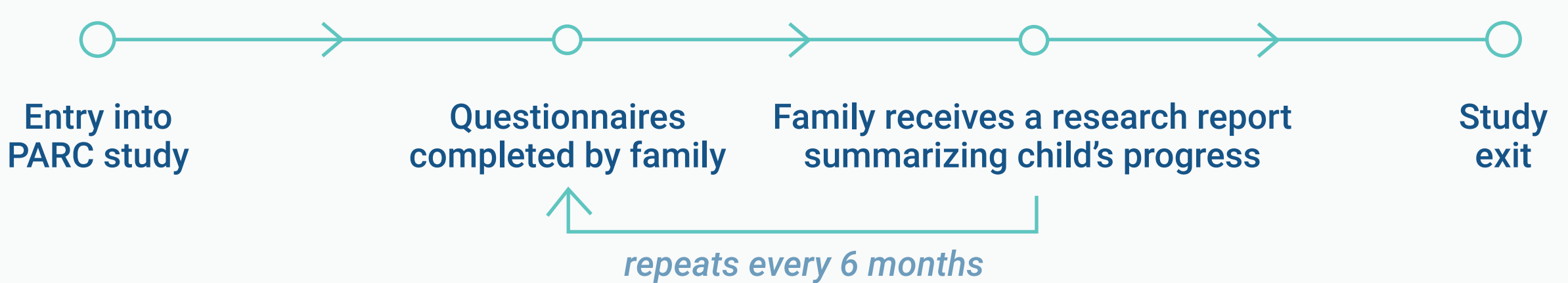


2 Examine how characteristics of **services** and **interventions** are associated with diversity in child and family functioning across time.



3 Generate research evidence to help enhance communication between clinicians and families as they work to develop more **personalized intervention plans** for Autistic children.

WHAT WILL MY PARTICIPATION INVOLVE?



You will be asked to complete a **brief set of questionnaires** about your child, your family, and your experiences with Autism services.

This helps us understand the developmental pathways of your child and your family's experience. We will ask you to complete these **questionnaires every 6 months until study exit (age 8)**.

Information from your completed questionnaires will be described in a summary **research report** sent to you after each timepoint.

This research report will provide a useful picture of your **child's progress** over time in relation to the issues described above. You may choose to share this research report with other professionals involved in your child's care (clinicians, teachers, family physicians).

WHO ARE WE RECRUITING?

✓ Families with newly-diagnosed Autistic children. Participants must have received a formal Autism diagnosis within the past 12 months.

✓ Participants must be younger than 7 years old.

Please note that currently we are only recruiting families with newly-diagnosed Autistic children. If your child received their diagnosis more than 12 months ago, there may be other research opportunities available to you.

To show our appreciation for taking the time to fill out the questionnaires, we provide a \$20 gift card to a store of your choice with each questionnaire package that is completed.



For questions, please contact: Kim Einarson, Supervisor, Regional Services

keinarson@ccrconnect.ca, 1-877-996-1599 ext. 2608

